

Original Article**SCIENTIFIC VALIDATION OF ANCIENT INDIAN DISEASE DIAGNOSIS SYSTEM, USING HUMAN ENERGY FIELD (AURA)**Jitendra Gupta¹, Aarti Julka¹, Rajeev Pahwa¹, Menka Kuril¹, Barkha Kuril¹¹R.D. Gardi Medical College, Ujjain.**Correspondence:** drjitendra_gupta@yahoo.co.in**ABSTRACT**

A Holistic System for Diagnosis and Therapy - The biofeedback system Biopulsar-Reflexograph® is a highly sensitive, biomedical measuring device, certified according to the European Guidelines for Medical Devices CE Class IIa. It is based on the latest computer technology combined with ancient healing sciences. The biofeedback sensor is a receiver for high-resolution, biomedical signals, which are taken from the reflex zones of the hand's palm. The science of reflexology teaches that certain parts of the hand have an energetic link to the organs of the body. The Biopulsar-Reflexograph® uses only low frequency currents for the measuring these energetic links.

The Biopulsar-Reflexograph® technology reveals new dimensions of analysis to treat and prevent imbalances on a mental, emotional or physical level, thereby reducing the risk of serious illness. Total number of cases observed was 425 and total number of control observed was 486.

Keyword - Biopulsar-Reflexograph, Aura, Energy Meridians, Traditional Chinese Medicine (TCM).

INTRODUCTION

Aura (Human Energy Field) - HEF is the manifestation of universal energy that is intimately involved with human life. It can be described as a luminous body that surrounds and interpenetrates the physical body, the condensed vibration of energy, emits its own characteristic radiation and is usually called the "Aura". The human aura or HEF is that part of UEF associated with the human body. It is the multidimensional, invisible radiation of a person and consists of different vibrations.

The aura consists of several layers which interpenetrate and surround each other in successive layers. Each succeeding layer is composed of finer substances and higher vibrations than the body that it surrounds and interpenetrates. These are also known as Bioenergies.

Bioenergetics is a method of studying and understanding the human personality in terms of the body and its energetic process. In bioenergetics' theory, it is believed that the body and the mind function together and are functionally identical (meaning what happens in the mind reflects what is happening in the body and vice versa). It is well-known that our body organs not only have their physical function but also function on a mental and emotional level.

Using advanced computer technology, the Biopulsar-Reflexograph® combines the scientific basis of reflex zone and meridian teachings. The analysis of the signals is done by placing the hand on a set of sensor pegs of high conductivity furnished on an electronic circuit board which

generate energy graphs and colored human energy field (aura) picture with great accuracy.

A Biopulsar scan can help in obtaining a permanent, reproducible and graphic record of vitality changes in the body. It is a new research tool and therapy method that can assist in the prevention of psychological and psychical problems.

This research project is being financially supported by MPCST, Bhopal.

MATERIAL AND METHOD

We observed 911 people out of which 425 were cases and 486 were control group, including both sexes, belonging to different caste and occupation within age range of 15-70.

We used a device called, "Biopulsar-Reflexograph" which is a Certified Medical Diagnostic Device having Permanent and Simultaneous Measuring of 49 Hand Reflex Zones Dynamic Biofield Presentation of the Whole Body (Verified by Medical Intuitives) and Zoom capabilities.

For taking the reading of a case, first of all, the palm is checked and if it is dry then a few drops of ECG gel and is rubbed over the palm. This helps in proper conduction. The palm is then placed on the Sensor Board for time duration of 1 minute. The final output, which is an aura picture and a graphical representation of energy levels, is then printed for analysis and interpretation. Measurements take place at the reflex zones of the palm. The sensor board is Gold Plated Sensors for Optimum reading capabilities. The data in the form of energy signals are recorded in the computer with the help of software and is saved.

The palm is then removed from the sensor board. It gives Reflex Zone Biofeedback of Complete Body via 50 Organs and Glands which produces an aura picture and gives a graphical

representation of energy levels. This information is printed and is used for text analysis and interpretation.

The Sample Graph of COPD Patient



The Sample Graph of Cardiac Patient

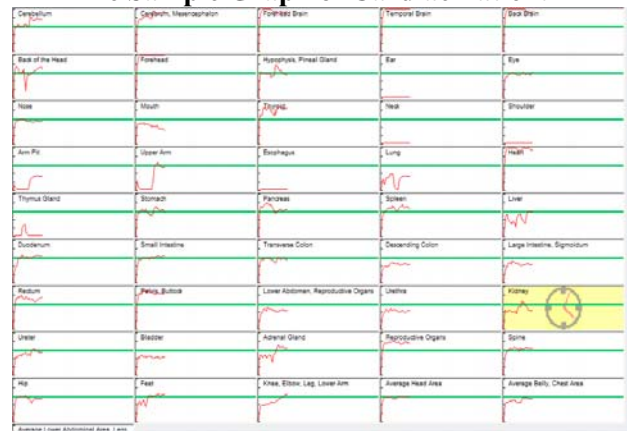


Fig.1: Biopulsar-Reflexograph



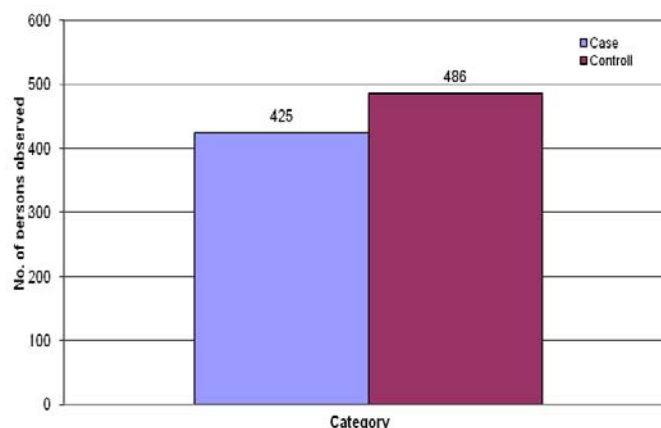
OBSERVATION

We observed 911 people in total out of which 425 were cases and 486 were controls. These cases were from various diseases such as Asthma/breathing problems, Cardiac, Diabetes, TB, GIT and others (general).

DISCUSSION AND INTERPRETATION

Practitioners have the liberty to interpret the measured biofeedback data according to their medical knowledge and subsequently arrange the appropriate treatment. Furthermore, the therapist has the possibility of establishing her/his own repertoire. The Biopulsar measures energy fields of each organ, which allows for more specific data input and helps in interpretation.

Graph 1: Total number of Persons Observed



Note: In our experience, as each person has their own unique energy field, a generic report does not address all of the patients concerns. And the practitioner should have openness towards this bioenergetics study that makes the study more interesting and also make the patients feels more

supported in knowing that their consultation is personalized to their needs.

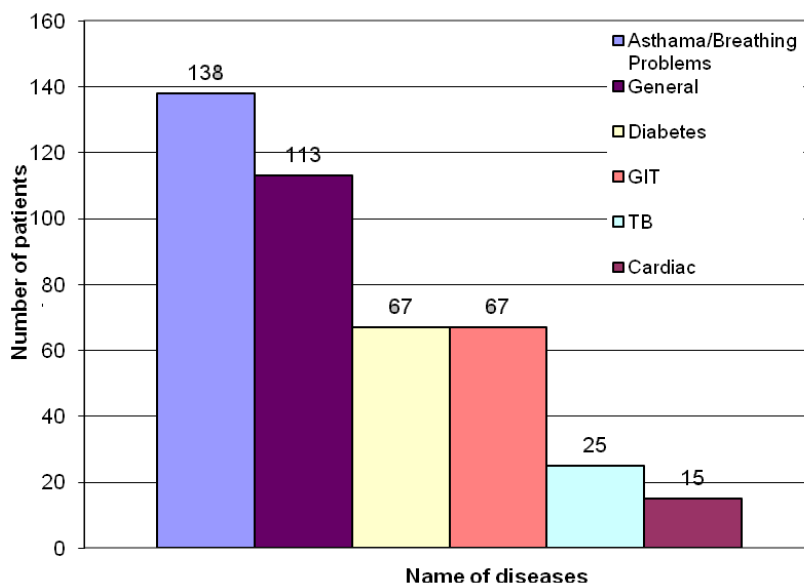
CONCLUSION

The Biopulsar is an experiential device that displays the interaction of the body and mind and the necessary feedback to help prevent mental or

physical illnesses and to become an expert in the science of the electromagnetic energy field, bioenergetics and most importantly organ vitality. It is very exciting to know that we have the ability to help improve and make changes in our life

thereby positively influencing others and contributing to a healthier and more conscious society and can play a very important role in the prevention of illness.

Graph 2: Total number of Patients observed for various diseases



ACKNOWLEDGEMENT

The authors gratefully acknowledge financial support by MPCST, Bhopal.

REFERENCES

1. Dr. Karl Erdt, Medical Doctor and Surgeon, Massing, Germany.
2. Pierrakos, J C (1977). The Core Energetic Process; New York, Institute of the New Age (Monograph).
3. Pierrakos, J. C. (1971). The Energy Field in Man and Nature; New York. Institute of Bioenergetic Analysis.
4. Brennan. B., Function of the Human Energy Field in the Dynamic Process of Health, Health and Disease. New York, Institute for the New Age, 1980.
5. Burr, H. S. 1944. "The Meaning of Bio-Electric Potentials". Yale J. Biol. Med. 16: 353-360.
6. Dobrin R., Conway (Brennan) B. and Pierrakos J., "New Electronics Methods for Medical Diagnosis and Treatment Using the Human Energy Field."
7. Linda Ward, Rudolf Schinnerl, Karin Kraft. Biopulsar® Technology Use in a Chinese Medicine Practice. Electrobiolgy Energy Therapy.